

# Testing for Local Maintained Nursery, Primary (including attached Nurseries) and Special Schools Hampshire and the Isle of Wight

January 2021

# Introduction

Eric Halton – County Education Manager (Primary)

Simon Francis – Senior Advisor for Early Years

Robert Pears – Consultant Public Health

Lucy Dennis – Senior Public Health Practitioner

# Welcome

## Teams live event.



Please use the chat bar function to ask any questions.

Some questions will be answered privately and others published to answer in public by moderators or answered live.

We are recording this content so if you wish to ask a question that you do not wish to be published, please make this clear. It will be answered privately.

# Purpose

- To provide a Hampshire, Isle of Wight perspective and to re-iterate and clarify key messages and points of procedure.
- A forum to be able to raise queries and secure support from health professionals and colleagues.

# Key Messages from DfE webinars

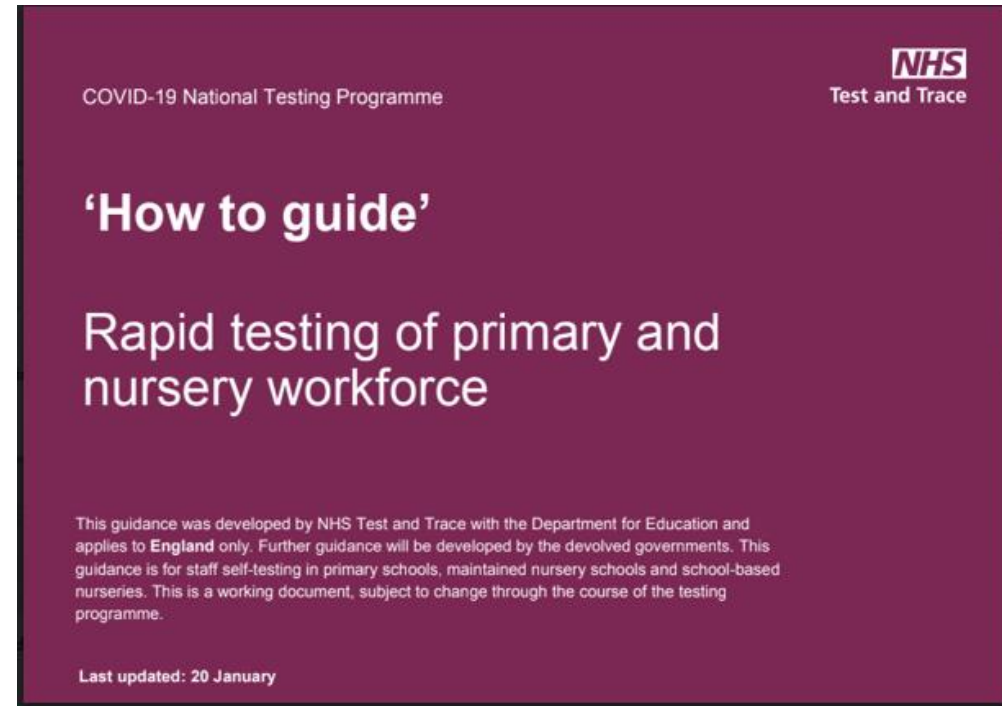
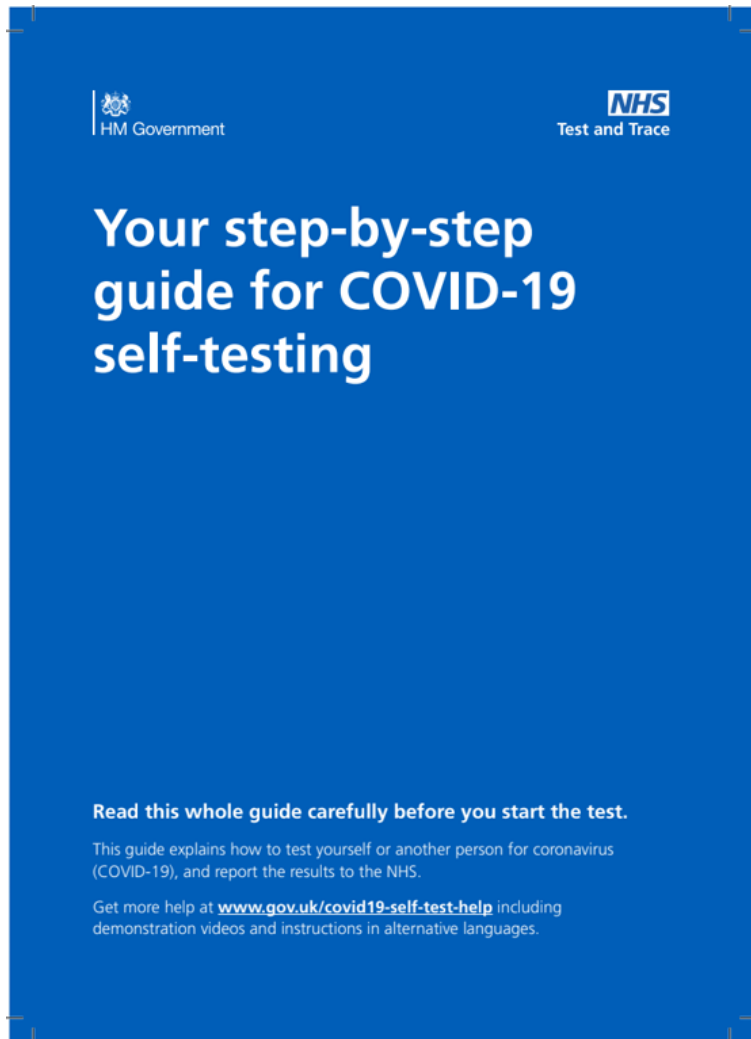
Simon Francis – Senior Advisor for Early Years

# Where to find information.

- All the materials, including slides from the webinars and other guidance documents can be found on the DfE central document sharing website:

[https://drive.google.com/drive/u/0/folders/1X4fLxy6\\_ppmpmKrv3hT2M6cduAN\\_GS54](https://drive.google.com/drive/u/0/folders/1X4fLxy6_ppmpmKrv3hT2M6cduAN_GS54)

# Key documents



# Aim of Mass Testing

- The aim of mass testing is to identify people without symptoms so that they can isolate accordingly
  - A different type of test to when symptoms are present – lateral flow test (LFT)
  - PCR test is used when there is a positive LFT, or symptoms are present
  - The aim is to break the chain of transmission between schools and households
- Guidance remains the same for people with symptoms - take PCR test, isolate, support contact tracing
- Testing forms part of the wider system of controls already in place
  - **Must not relax these existing measures but reinforce them**
  - An opportunity to remind people of the importance of the simple hands-face-space and ventilation measures





# Do staff have to engage with testing?

- No, it is entirely voluntary.
- We believe there are significant benefits to be gained from as many people engaging and self-testing.

*Every positive case identified by this process is one more **asymptomatic** person who would not otherwise have been identified.*

# Reporting

Each time a test is completed the individual member of staff is responsible for reporting their results:

1. To Test and Trace via the secure on-line portal
2. Locally to the school- who then report and take appropriate actions

# Who should be included?

Staff (adults) who are on site regularly and **who you deem to be part of your school community.**

- Teachers, nursery staff, support staff, administrative staff, lunchtime assistants, catering staff, cleaning staff.
- Adults who may use part of your school regularly but are not employed by you... e.g. private pre-school staff, out of school provision etc.
- Adopt an HCC/IOW member of staff! Music service, PBS

# Maintaining the integrity of the process

- Tests are only for the member of staff.....not friends and family.
- Data protection:
  - By taking the test, staff are consenting to the data being used by the Department of Health/Test and Trace etc.
  - Schools must follow their own GDPR policies and procedures for the collection and storage of the localised data that will be collected.

# Pragmatism

- Do I have to start on Monday 25<sup>th</sup> January 2021?
- Most effective if staff are confident and clear about the process
- Another tool to help combat transmission and to reduce anxieties

pragmatism

# Where to go for help

Email: [RapidTesting.SCHOOLS@education.gov.uk](mailto:RapidTesting.SCHOOLS@education.gov.uk)

**NHS**  
Test and Trace

Step 7 - Recording results at school and nursery and reporting incidents

## Incident reporting

If there are any issues with the tests that could potentially impact the quality or safety of testing, raise a 'yellow card'

| Schools  | Individuals   |
|--|---|
| <p><b>Incidents</b></p> <p>In the case of an issue, it is most likely that this will be experienced by an individual at home. However, if <b>there seems to be repeated or similar issues</b> (e.g. multiple repeat void tests, unclear results, leaking/damaged tubes etc.), these should be recorded by the school and reported to the DfE Helpline, who will escalate to DHSC for investigation. Please record the time, date and details reported.</p> <p>DHSC/MHRA may require the school to provide more information if further investigation is required.</p> <p><b>Learning and improving</b></p> <p>To ensure testing is running well, we will be in contact with schools from time to time to find out how testing is going and learn any lessons. Guidance will be updated to reflect this.</p> | <p><b>Clinical issue</b></p> <p>If there is a clinical incident which led or has potential to harm, participants are advised to report it on <a href="https://coronavirusyellowcard.mhra.gov.uk">https://coronavirusyellowcard.mhra.gov.uk</a>. <b>This is not for seeking immediate medical care. Medical care should be sought through the usual route of contacting 111 or 999.</b></p> <p><b>Non-clinical issue</b></p> <p>For incidents occurring at home, participants are advised to report any issues (something damaged, or missing or difficult to use in the kit, unable to log result etc.) to 119 in England, Wales, Northern Ireland and 0300 303 2713 for Scotland</p> <p><b>Inform school</b></p> <p>Participants should inform school about ongoing test-related problems, so that they can check if this is a wider issue across other users.</p> |

17

Examples of clinical issues are a swab breaking in the mouth, bleeding, allergic reaction on using the kit etc. whereas an example of a non-clinical issue would be missing items from a test kit.

**NHS**  
Test and Trace

## Get support

Schools and nurseries in England can raise questions, concerns or report issues via the DfE coronavirus helpline on **0800 046 8687**

**DfE coronavirus helpline opening hours**

Monday to Friday: 8am to 6pm  
Saturday and Sunday: 10am to 6pm

**Anyone with one or more symptoms of coronavirus**

A high temperature, a new continuous cough, or a loss or change in sense of smell or taste, should self-isolate and [book a test](#) or call 119 in England and Wales, or 0300 303 2713 in Scotland and Northern Ireland.

**If you have an urgent media query**

If you or your school or nursery is approached by a member of the media, please [contact the Department of Health and Social Care press office](#) in the first instance.



# Question and answer