

# DEIB Calendar

2024 - 25



# September

## 2024



### SEPTEMBER IS:

Blood Cancer Awareness Month  
 Childhood Cancer Awareness Month  
 Sickle Cell Awareness Month  
 Urology Awareness Month  
 World Alzheimer's Month  
 World Fun Fair Month

Monday	Tuesday	Wednesday	Thursday	Friday	Saturday	Sunday
30						1
2	3	4	5 International Day of Charity	6 Colour Blind Awareness Day / National Read a Book Day	7	8 Feast of The Birth of The Virgin
9	10 World Suicide Prevention Day	11	12	13	14 Feast of The Cross	15 International Day of Democracy / World Afro Day's 'Big Hair Assembly'
<b>Sexual Health Awareness Week</b>						
16 Anant Chaturdashi	17	18	19	20	21 Feast of St. Matthew	22 Mabon Autumn Equinox
<b>Orchid Male Cancer Awareness Week</b>						
<b>Professional Care Workers Week</b>						
<b>Rheumatoid Arthritis Awareness Week</b>						
23 Bi Visibility Day / International Day of Sign Languages	24	25	26 World Contraception Day / European Day of Languages	27 Meskel	28 International Right to Know Day	29 Feast of St. Michael and All Angels World Heart Day
<b>International Week of Happiness at Work / Cycle to School Week / Migraine Awareness Week / Organ Donation Week / UK National Inclusion Week</b>						

# October

## 2024



### OCTOBER IS:

ADHD Awareness Month  
 Black History Month  
 Breast Cancer Awareness Month  
 Down Syndrome Awareness Month  
 Global Diversity Awareness Month  
 Lupus Awareness Month  
 Menopause Awareness Month

Monday	Tuesday	Wednesday	Thursday	Friday	Saturday	Sunday
	<b>1</b> International Day of Older Persons	<b>2</b> <b>Rosh Hashanah / Feast of the Guardian Angels</b> International Day of Non-Violence	<b>3</b> Rosh Hashanah	<b>4</b> <b>Rosh Hashanah / Feast of St. Francis of Assisi</b> World Smile Day	<b>5</b> <b>Fast of Gedaliah / Mawlid al-Nabi</b> World Teachers' Day	<b>6</b> World Cerebral Palsy Day
<b>7</b>	<b>8</b> World Dyslexia Awareness Day	<b>9</b>	<b>10</b> World Homeless Day / World Mental Health Day / World Sight Day	<b>11 Yom Kippur</b> International Day of the Girl Child / National Coming Out Day	<b>12</b> <b>Yom Kippur / Dussehra</b>	<b>13</b>
<b>Baby Loss Week</b>						
<b>Dyslexia Awareness Week</b>						
<b>National Work Life Week</b>						
<b>14</b>	<b>15</b> Global Wave of Light / Pregnancy and Infant Loss Remembrance Day	<b>16</b> <b>Sukkot</b> International Pronouns Day / World Food Day	<b>17</b> <b>Sukkot</b> International Day for the Eradication of Poverty / World Values Day	<b>18</b> <b>Sukkot / Feast of St. Luke</b> Anti-slavery Day / Menopause Day / Show Racism the Red Card Day / Dev. Language Disorder Day	<b>19</b> <b>Sukkot / Birthday of Guru Ram Das Sahib Ji</b>	<b>20</b> <b>Sukkot / Installation of the Guru Granth Sahib</b> World Osteoporosis Day
<b>21</b> Sukkot	<b>22</b> <b>Sukkot</b> International Stammering Awareness Day	<b>23</b> <b>Simchat Torah / Shemini Atzeret</b>	<b>24</b> <b>Simchat Torah / Shemini Atzeret</b> United Nations Day	<b>25</b> <b>Simchat Torah / Shemini Atzeret</b>	<b>26</b> Intersex Awareness Day	<b>27</b> National Mentoring Day
<b>National Adoption Week</b>						
<b>28</b> Feast of Saints Simon and Jude	<b>29</b> World Stroke Day	<b>30</b>	<b>31</b> All Hallows' Eve / Reformation Day			

# November

2024



## NOVEMBER IS:

Chronic Obstructive Pulmonary Disease Awareness Month  
 Islamophobia Awareness Month  
 Lung Cancer Awareness Month  
 Mouth Cancer Action Month  
 Movember Men's Health Awareness Month  
 Pancreatic Cancer Awareness Month  
 National Diabetes Month

Monday	Tuesday	Wednesday	Thursday	Friday	Saturday	Sunday
				<b>1</b> Bandi Chhor Divas / Divali / Feast of all the Saints / Samhain	<b>2</b> Birth of the Báb / All Souls' Day / Coronation of Emperor Haile Selassie	<b>3</b>
<b>4</b>	<b>5</b> Chhath Puja	<b>6</b> Chhath Puja National Stress Awareness Day	<b>7</b> Chhath Puja	<b>8</b> Chhath Puja Intersex Day of Solidarity	<b>9</b> Feast of the Dedication of the Lateran Basilica	<b>10</b> Remembrance Sunday
<b>11</b> Armistice Day	<b>12</b>	<b>13</b> World Kindness Day	<b>14</b> World Diabetes Day	<b>15</b> Birthday of Guru Nanak Dev Ji / Nativity Fast Begins	<b>16</b> Disability History Month Starts / International Day for Tolerance	<b>17</b> International Students' Day
<b>Transgender Awareness Week</b>						
<b>18</b>	<b>19</b> International Men's Day	<b>20</b> Transgender Day of Remembrance / World Children's Day	<b>21</b> Presentation of the Theotokos	<b>22</b>	<b>23</b>	<b>24</b> Feast of Christ the King / Guru Tegh Bahadur Martyrdom
<b>25</b> Day of the Covenant International Day for the Elimination of Violence Against Women	<b>26</b> Ascension of Abdu'l-Bahá	<b>27</b> Ascension of Abdu'l-Bahá	<b>28</b>	<b>29</b>	<b>30</b> St. Andrew's Day	

# December

2024



## DECEMBER IS:

AIDS Awareness Month

Decembeard

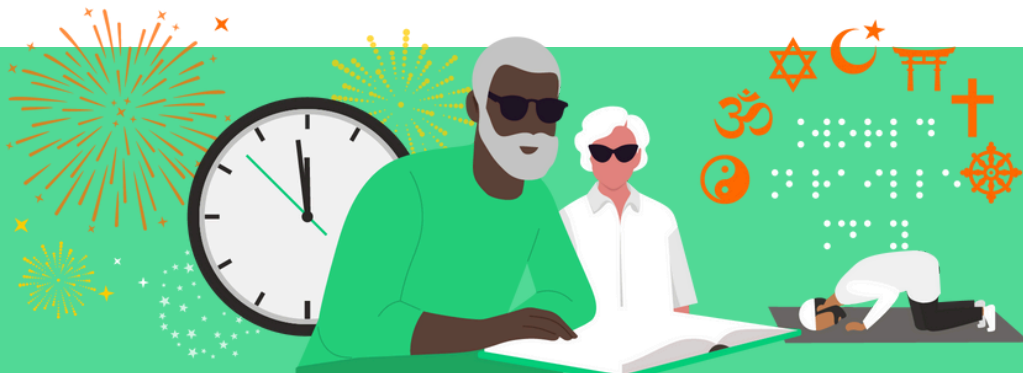
Universal Month for Human Rights

Disability History Month

Monday	Tuesday	Wednesday	Thursday	Friday	Saturday	Sunday
<b>30</b> Hanukkah	<b>31</b> Hanukkah / Hogmanay / New Year's Eve / Watch Night					<b>1</b> Advent Sunday World AIDS day
<b>2</b> International Day for the Abolition of Slavery	<b>3</b> International Day of Persons with Disabilities	<b>4</b>	<b>5</b> International Volunteer Day	<b>6</b>	<b>7</b>	<b>8</b> Feast of the Immaculate Conception / Rohatsu (Bodhi Day)
<b>9</b>	<b>10</b> Human Rights Day	<b>11</b> Gita Jayanti	<b>12</b> International Universal Health Coverage Day	<b>13</b>	<b>14</b>	<b>15</b> Dhanu Sankranti
<b>16</b>	<b>17</b>	<b>18</b> International Migrants' Day	<b>19</b>	<b>20</b> International Human Solidarity Day	<b>21</b> Yule Winter Solstice	<b>22</b>
<b>23</b>	<b>24</b> Christmas Eve	<b>25</b> Christmas Day / Hanukkah / Zarathosht diso	<b>26</b> Boxing Day / Hanukkah / Feast of Saint Stephen	<b>27</b> Hanukkah	<b>28</b> Hanukkah / Holy Innocents' Day	<b>29</b> Hanukkah / Feast of the Holy Family

# January

## 2025



### JANUARY IS:

Alcohol Change UK's Dry January  
 Celebration of Life Month  
 Cervical Health Awareness Month  
 Thyroid Awareness Month

Monday	Tuesday	Wednesday	Thursday	Friday	Saturday	Sunday
		<b>1</b> Hanukkah / Gantan-sai (New Year) / Solemnity of Mary, Mother of God	<b>2</b> Hanukkah	<b>3</b>	<b>4</b> World Braille Day	<b>5</b> Twelfth Night
<b>6</b> Epiphany	<b>7</b> Feast of the Nativity of Our Lord	<b>8</b> Ethnicity Pay Gap Day	<b>9</b>	<b>10</b>	<b>11</b>	<b>12</b> Baptism of the Lord Jesus
<b>13</b> Lohri / Maghi / Seijin No Hi / Tu BiShvat	<b>14</b> Mahayana New Year / Makar Sankranti / Old New Year / Pongal	<b>15</b> Pongal	<b>16</b> Pongal	<b>17</b> Pongal / Birthday of Guru Gobind Singh Sahib Ji	<b>18</b> Week of Prayer for Christian Unity	<b>19</b> Week of Prayer for Christian Unity / Timkat World Religion Day
<b>20</b> Martin Luther King Day	<b>21</b>	<b>22</b>	<b>23</b>	<b>24</b> International Day of Education	<b>25</b> Conversion of St. Paul	<b>26</b>
<b>Week of Prayer for Christian Unity</b>						
<b>Cervical Cancer Prevention Week</b>						
<b>27</b> Lailat al-Miraj Holocaust Memorial Day	<b>28</b> Data Privacy Day	<b>29</b> Chinese New Year	<b>30</b>	<b>31</b>		

# February

## 2025



### FEBRUARY IS:

LGBT+ History Month  
National Heart Month  
Raynaud's and Scleroderma  
Awareness Month

Monday	Tuesday	Wednesday	Thursday	Friday	Saturday	Sunday
					<b>1</b> World Hijab Day	<b>2</b> Candlemas / Imbolc / Vasant Panchami / Zacchaeus Sunday
<b>3</b> Setsubun-sai	<b>4</b> World Cancer Day	<b>5</b>	<b>6</b> International Day to Zero Tolerance for Female FGM / Time to Talk Day	<b>7</b>	<b>8</b>	<b>9</b> Tridion Begins
<b>Children's Mental Health Week</b>						
<b>World Interfaith Harmony Week</b>						
<b>UK Race Equality Week</b>						
<b>10</b> Birthday of Guru Harrai Sahib Ji	<b>11</b> Thaipusam Int. Day of Women and Girls in Science / Safer Internet Day / World Day of the Sick	<b>12</b> Magha Puja Red Hand Day for Child Soldiers	<b>13</b>	<b>14</b> Valentine's Day	<b>15</b> Nirvana Day International Childhood Cancer Day	<b>16</b> Sunday of the Prodigal Son
<b>17</b> World Human Spirit Day	<b>18</b>	<b>19</b>	<b>20</b> World Day of Social Justice	<b>21</b> Care Day	<b>22</b> Feast of the Chair of St. Peter	<b>23</b> Meatfare Sunday
<b>24</b>	<b>25</b> Intercalary Days	<b>26</b> Intercalary Days / Maha Shivratri	<b>27</b> Intercalary Days	<b>28</b> Ramadan Begins / Intercalary days International Stand Up to Bullying Day		

**Eating Disorder Awareness Week**

# March

2025



## MARCH IS:

Ovarian Cancer Awareness Month  
 Prostate Cancer Awareness Month  
 Women's History Month  
 UK Marie Curie Cancer Care's  
 Great Daffodil Appeal Month

Monday	Tuesday	Wednesday	Thursday	Friday	Saturday	Sunday
<b>31</b> <b>Eid al-Fitr/ Navatri</b> International Trans Day of Visibility					<b>1 Intercalary Days / 19th Day Fast Begins / St. David's Day</b> Disability Day of Mourning / Self-Injury Awareness Day / Int. Wheelchair Day / Zero Discrimination Day	<b>2</b> <b>Cheesefare Sunday</b>
<b>3</b> <b>Great Lent Begins</b> World Hearing Day	<b>4</b> <b>Shrove Tuesday</b>	<b>5</b> <b>Ash Wednesday</b>	<b>6</b>	<b>7</b>	<b>8</b> International Women's Day	<b>9</b> <b>Feast of Orthodoxy</b>
<b>Endometriosis Awareness Week</b>						
<b>10</b>	<b>11</b>	<b>12</b>	<b>13</b> <b>Holika Dahan / Purim</b>	<b>14</b> <b>Hola Mohalla / Holi / Nanakshahi (New Year)</b>	<b>15</b> <b>Hola Mohalla</b> International Day to Combat Islamaphobia	<b>16</b> <b>Hola Mohalla</b> Young Carers' Action Day
<b>Empathy Week</b>						
<b>17</b> <b>St. Patrick's Day</b>	<b>18</b> Global Recycling Day	<b>19</b> <b>Feast of St. Joseph</b>	<b>20</b> <b>Ostara</b> International Day of Happiness	<b>21</b> <b>Nowruz (New Year)</b> Single Parents' Day / Int. day for the Elimination of Racial Discrimination / World Down Syndrome Day	<b>22</b>	<b>23</b>
<b>Neurodiversity Celebration Week</b>						
<b>24</b> World Tuberculosis (TB) Day	<b>25</b> <b>Annunciation of the Virgin Mary / Annunciation to the Theotokos</b> Int. Day of Remembrance of the Victims of Slavery and the Transatlantic Slave Trade	<b>26</b> <b>Laylat Al-Qadr</b>	<b>27</b>	<b>28</b>	<b>29</b>	<b>30</b> <b>Ugadi (New Year) / Navatri</b> Mother's Day / World Bipolar Day





# April

## 2025



### APRIL IS:

Autism Awareness Month  
 Bowel Cancer Awareness Month  
 National Autism Awareness Month  
 Parkinson's Awareness Month  
 Stress Awareness Month

Monday	Tuesday	Wednesday	Thursday	Friday	Saturday	Sunday
	<b>1</b> Navatri	<b>2</b> Navatri World Autism Awareness Day	<b>3</b> Navatri	<b>4</b> Navatri	<b>5</b> Navatri	<b>6</b> Navatri / Rama Navami International Asexuality Day
<b>World Autism Acceptance Week</b>						
<b>7</b> Navatri World Health Day	<b>8</b> International Romani Day	<b>9</b>	<b>10</b> Mahavir Janma Kalyanak	<b>11</b>	<b>12</b> Birthday of Guru Khalsa Panth Sahib Ji / Hanuman Jayanti / Lazarus Saturday / Passover	<b>13</b> Passover / Songkran (Thai New Year) / Theravada New Year
<b>14</b> Passover / Birth of the Khalsa (Vaisakhi) / Tamil New Year	<b>15</b> Passover	<b>16</b> Passover	<b>17</b> Passover / Maundy Thursday	<b>18</b> Passover / Good Friday	<b>19</b> Passover	<b>20</b> Passover / Easter Sunday / First day of Ridvan / Pascha
<b>21</b>	<b>22</b> Earth Day / Stephen Lawrence Day	<b>23</b> St. George's Day	<b>24</b> Yom HaShoah	<b>25</b> Feast of St. Mark the Evangelist World Malaria Day	<b>26</b> Lesbian Visibility Day	<b>27</b>
<b>Multiple Sclerosis Awareness Week</b>						
<b>28</b> 9th Day of Ridvan World Day for Health and Safety at Work	<b>29</b> Birthday of Guru Tegh Bahadur Sahib Ji	<b>30</b> Birthday of Guru Arjan Dev Ji / Yom HaZikaron / Akshaya Tritiya				

# May

## 2025



### MAY IS:

Action on Stroke Month  
 Coeliac Awareness Month  
 Hepatitis Awareness Month  
 UK National Walking Month

Monday	Tuesday	Wednesday	Thursday	Friday	Saturday	Sunday
			<b>1</b> Beltane / 12th Day of Ridvan / Yom Ha'Atzmaut	<b>2</b>	<b>3</b> Feast of Saints Philip and James World Press Freedom Day	<b>4</b> International Family Equality Day
<b>5</b>	<b>6</b>	<b>7</b>	<b>8</b>	<b>9</b> Birthday of Guru Angad Dev Ji	<b>10</b>	<b>11</b>
<b>Deaf Awareness Week</b>						
<b>12</b> Vesak International Nurses Day	<b>13</b>	<b>14</b> Feast of St. Matthias National Day of Staff Networks	<b>15</b> Lag BaOmer Global Accessibility Awareness Day / Int. Day of Families	<b>16</b>	<b>17</b> International Day Against Homophobia, Transphobia and Biphobia	<b>18</b>
<b>Black Inclusion Week</b> <b>Mental Health Awareness Week</b>						
<b>19</b>	<b>20</b>	<b>21</b> World Day for Cultural Diversity for Dialogue and Development	<b>22</b> Birthday of Guru Amar Das Sahib Ji International Day for Biological Diversity	<b>23</b> Declaration of the Báb	<b>24</b> Pansexual Visibility Day	<b>25</b>
<b>Dementia Action Awareness Week</b> <b>Learning at Work Week</b>						
<b>26</b> Yom Yerushalayim	<b>27</b>	<b>28</b> Ascension of Baha'u'llah	<b>29</b> Feast of the Ascension International Day of United Nations Peacekeepers	<b>30</b>	<b>31</b> Visitation of the Blessed Virgin Mary World No Tobacco Day	

# June 2025



## JUNE IS:

Gypsy, Roma and Traveller History Month

LGBTQ+ Pride Month

Motor Neurone Disease Awareness Month

Stillbirth and Neonatal Death Awareness Month

Monday	Tuesday	Wednesday	Thursday	Friday	Saturday	Sunday
30						1 Shavuot
2 Shavuot	3 Shavuot	4 Hajj International Day of Innocent Children Victims of Aggression	5 Hajj World Environment Day	6 Hajj / Eid al-Adha / Waqf al Arafa	7 Hajj / Eid al-Adha	8 Hajj / Pentecost
<b>Volunteers Week</b>						
9 Hajj	10	11	12 World Day Against Child Labour	13	14 World Blood Donor Day / Global Wellness Day	15 Trinity Sunday Race Unity Day / World Elder Abuse Awareness Day / Father's Day
<b>Men's Health Week</b>						
16 Martyrdom of Guru Arjan	17 World Day to Combat Desertification and Drought	18 Autistic Pride Day	19 The Feast of Corpus Christi	20 World Refugee Day	21 Litha Summer Solstice / World Humanist Day	22 Birthday of Guru Hargobind Sahib Ji UK Windrush Day
<b>Refugee Week</b>						
<b>Learning Disability Week</b>						
23	24 Nativity of St. John the Baptist	25 Islamic New Year	26	27 Feast of the Sacred Heart of Jesus	28	29 Feast of Saints Peter and Paul
<b>School Diversity Week</b>						

# July 2025



## JULY IS:

Disability Pride Month  
 Group B Strep Awareness Month  
 Make a Difference to Children Month  
 UV Safety Awareness Month  
 International Women  
 with Alopecia Month

Monday	Tuesday	Wednesday	Thursday	Friday	Saturday	Sunday
	1	2	3 Feast of the St. Thomas the Apostle	4	5 Ashura	6
7	8	9 Martyrdom of the Báb	10 Asalha Puja (Dharma Day)	11 World Population Day	12	13
14 International Non- Binary People's Day	15 St. Vladimir the Great Day World Youth Skills Day	16 International Drag Day	17 World Day for International Justice	18 Nelson Mandela International Day	19	20
21	22 Feast of St. Mary Magdalene	23 Birthday of Emperor Haile Selassie	24 Pioneer Day	25 Feast Day of St. James	26	27
28 World Hepatitis Day	29 Birthday of Guru Har Krishan Sahib Ji	30 International Day of Friendship / World Day Against Trafficking Persons	31			

# August

## 2025



### AUGUST IS:

Psoriasis Awareness Month

Monday	Tuesday	Wednesday	Thursday	Friday	Saturday	Sunday
				<b>1</b> Fast in Honour of the Holy Mother of the Lord Jesus / Lammas / Lughnasadh	<b>2</b> Tish'a B'av	<b>3</b> Tish'a B'av
<b>4</b>	<b>5</b>	<b>6</b> Feast of Transfiguration / Transfiguration of the Lord	<b>7</b>	<b>8</b> The 15th of Av	<b>9</b> Raksha Bandhan International Day of the World's Indigenous People	<b>10</b> Feast of St. Lawrence
<b>11</b>	<b>12</b> International Youth Day	<b>13</b> Obon	<b>14</b> Obon Partition Day	<b>15</b> Obon / Assumption of Mary / Dormition of the Theotokos	<b>16</b> Krishna Janmashtami	<b>17</b>
<b>18</b>	<b>19</b> World Humanitarian Day	<b>20</b>	<b>21</b>	<b>22</b> International Day Commemorating the Victims of Acts of Violence Based on Religion or Belief	<b>23</b> International Day for the Remembrance of the Slave Trade and its Abolition	<b>24</b> Feast of St. Bartholomew the Apostle
<b>25</b>	<b>26</b>	<b>27</b> Ganesh Chaturthi	<b>28</b> Samvatsari	<b>29</b> Beheading of St. John the Baptist / Birthday of Sri Guru Granth Sahib Ji	<b>30</b> Grief Awareness day	<b>31</b>

# DiverseEd Resources

## Our DEIB Toolkits

OVERVIEW:

[diverseeducators.co.uk/our-toolkits/](https://diverseeducators.co.uk/our-toolkits/)

 <p><u><a href="#">Anti-racism</a></u></p>	 <p><u><a href="#">Belonging</a></u></p>	 <p><u><a href="#">Bereavement and Grief</a></u></p>	 <p><u><a href="#">Class Inequality Awareness</a></u></p>	 <p><u><a href="#">Coaching and Mentoring</a></u></p>	 <p><u><a href="#">Courageous Conversations</a></u></p>	 <p><u><a href="#">Cultural Intelligence</a></u></p>	 <p><u><a href="#">Culturally Responsive Pedagogy</a></u></p>
 <p><u><a href="#">DEIB Leaders</a></u></p>	 <p><u><a href="#">Disability Awareness</a></u></p>	 <p><u><a href="#">Diversity in the Curriculum</a></u></p>	 <p><u><a href="#">EAL and Multilingualism</a></u></p>	 <p><u><a href="#">Flexible Working</a></u></p>	 <p><u><a href="#">Gender Equality</a></u></p>	 <p><u><a href="#">Global Citizenship</a></u></p>	 <p><u><a href="#">Global Majority Educators</a></u></p>
 <p><u><a href="#">Governors' DEIB Toolkit</a></u></p>	 <p><u><a href="#">Gypsy Roma Traveller</a></u></p>	 <p><u><a href="#">HR Leaders' DEIB Toolkit</a></u></p>	 <p><u><a href="#">Inclusive Allyship</a></u></p>	 <p><u><a href="#">Inclusive Classrooms</a></u></p>	 <p><u><a href="#">Inclusive Language</a></u></p>	 <p><u><a href="#">Inclusive Leadership</a></u></p>	 <p><u><a href="#">Inclusive Recruitment</a></u></p>
 <p><u><a href="#">Inclusive RSHE</a></u></p>	 <p><u><a href="#">Inclusive Workplaces</a></u></p>	 <p><u><a href="#">Intersectionality</a></u></p>	 <p><u><a href="#">ITTE DEIB Toolkit</a></u></p>	 <p><u><a href="#">LGBTQ+ Inclusion</a></u></p>	 <p><u><a href="#">Menopause Awareness</a></u></p>	 <p><u><a href="#">Mental Health and Wellbeing</a></u></p>	 <p><u><a href="#">Microaggressions</a></u></p>
 <p><u><a href="#">Neurodiversity</a></u></p>	 <p><u><a href="#">Parents and Carers</a></u></p>	 <p><u><a href="#">Pregnancy and Maternity</a></u></p>	 <p><u><a href="#">Psychological Safety</a></u></p>	 <p><u><a href="#">Religion &amp; Beliefs</a></u></p>	 <p><u><a href="#">Transgender Rights</a></u></p>	 <p><u><a href="#">Trauma-informed</a></u></p>	 <p><u><a href="#">Unconscious Bias</a></u></p>